

LRI-MS  
lri-ms.eu

Funded by the  
Justice Programme  
of the European Union



# Land Register Interconnection 2

Mathias Maurer  
Austrian Federal Computing Center

 Federal Ministry  
Republic of Austria  
Justice

 **RIK**  
Centre of Registers and Information Systems

  
Court Administration of the Republic of Latvia

  
PRIME MINISTER'S OFFICE  
HUNGARY

  
Registradores  
DE ESPAÑA

 instituto dos  
**registos**  
e do notariado

# The Origin

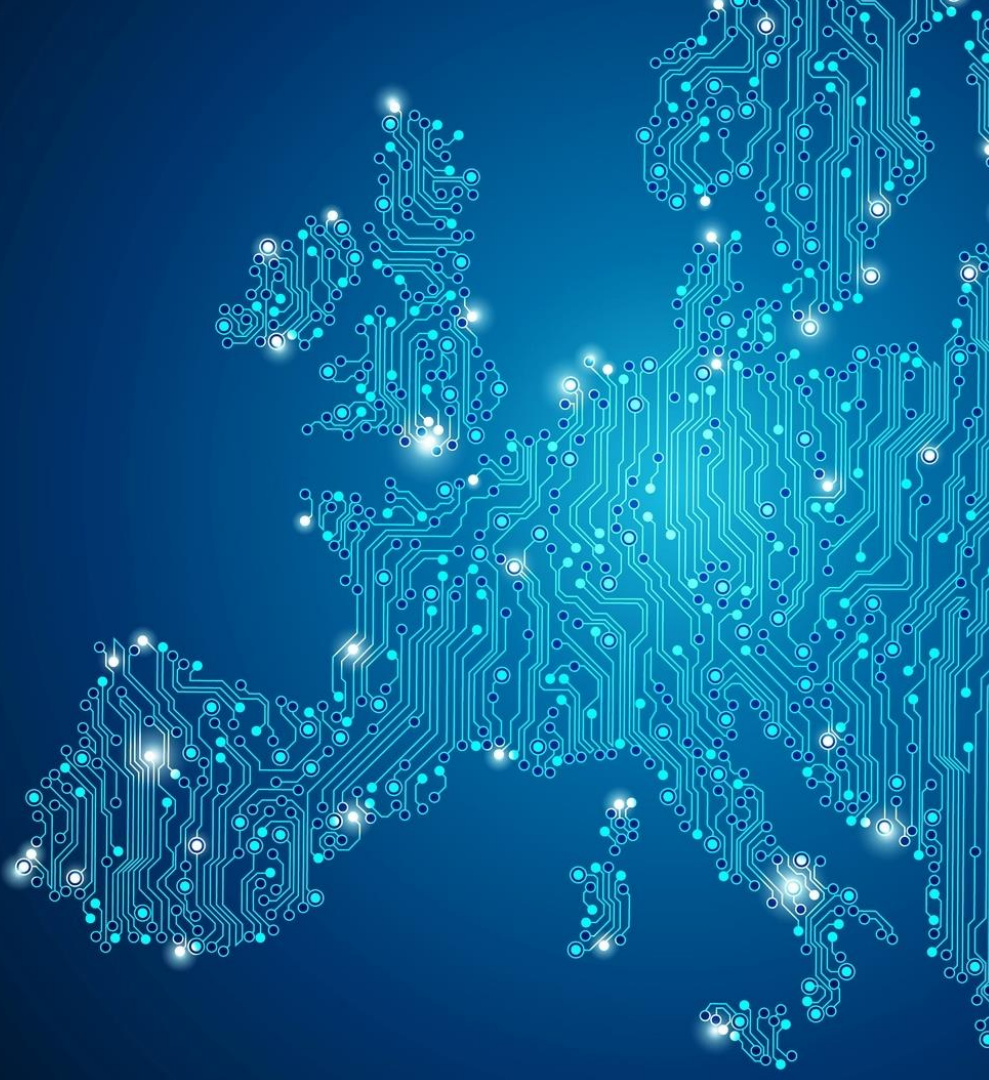
# Origin

- Regulation (EU) No 650/2012
  - “[...] in matters of succession and on the creation of a European Certificate of Succession”
  - Principle of one inheritance case per EU citizen
  - How to obtain EU-wide information about assets of the decedent?
    - Companies
    - Real Estate
    - Etc.

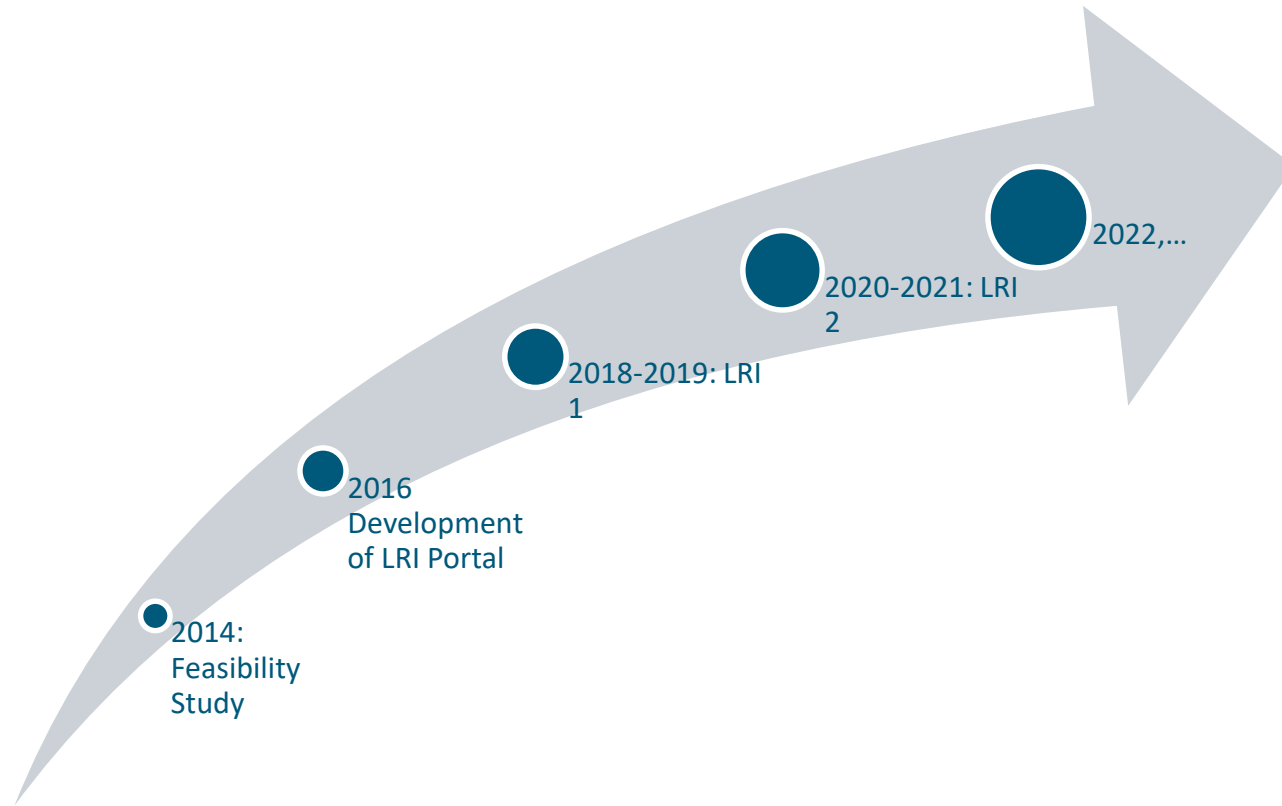


# Connecting Europe

- Bringing Europe closer together
- Via e-Justice Portal
- Central access to legal information  
(here: land register information)



# LRI Evolution



# Other use cases

- Citizen buys real estate
- Bank needs security for loan
- Public Prosecutor needs to block financial transactions due to money laundering in connection with real estate trades



# The Project

# Key project data

Content
Action acronym: <b>LRI MS Connection 2</b>
Action full title: <b>Connection of additional Member States to the Land Registers Interconnection Platform</b>
Duration: <b>20 months</b>
Start-Date: <b>01 March 2020</b>
End-Date: <b>31 October 2021</b>

Project Partners	
<b>AT</b>	<b>Federal Ministry of Justice</b>
<b>EE</b>	<b>Centre of Registers and Information Systems</b>
<b>ES</b>	<b>Colegio de Registradores</b>
<b>HU</b>	<b>Prime Minister's Office</b>
<b>LV</b>	<b>Courts Administration</b>
<b>PT</b>	<b>Instituto dos Registos e do Notariado</b>



# Project Partners

 Federal Ministry  
Republic of Austria  
Justice

supported by:  
**BRZ**

 **RIK**  
Centre of Registers and Information Systems



Court Administration of the Republic of Latvia

 **instituto dos  
registos  
e do notariado**



# Objectives

1. Connect existing land registers
2. Consolidate and evolve results of previous LRI project




Search
Login

Home > Registers > Land registers > Land Registers Interconnection (LRI)

## Land Registers Interconnection (LRI)

**Properties**

This page presents the properties matching the search results.

**List of properties**

Country	Address	Property ID	Further details	Available documents
Belgium	Dromolaxia, Timiou Prodromou 1, 1(1)	1000	<a href="#">View details</a>	<a href="#">Available documents</a>
Belgium	Penolia, Grigoriou Auksentiou 1, 1(1)	2000	<a href="#">View details</a>	<a href="#">Available documents</a>
Italy	Uditore-Passo di Rigano, Via Luigi Sarullo 2, 2(8)	1000	<a href="#">View details</a>	<a href="#">Available documents</a>
Italy	Palazzo Reale-Monte di Pietà, Via Francesco Omodei 1, 1(5)	2000	<a href="#">View details</a>	<a href="#">Available documents</a>
Sweden	Dromolaxia, Timiou Prodromou 1, 1(1)	1000	<a href="#">View details</a>	<a href="#">Available documents</a>
Sweden	Penolia, Grigoriou Auksentiou 1, 1(1)	2000	<a href="#">View details</a>	<a href="#">Available documents</a>

Please select

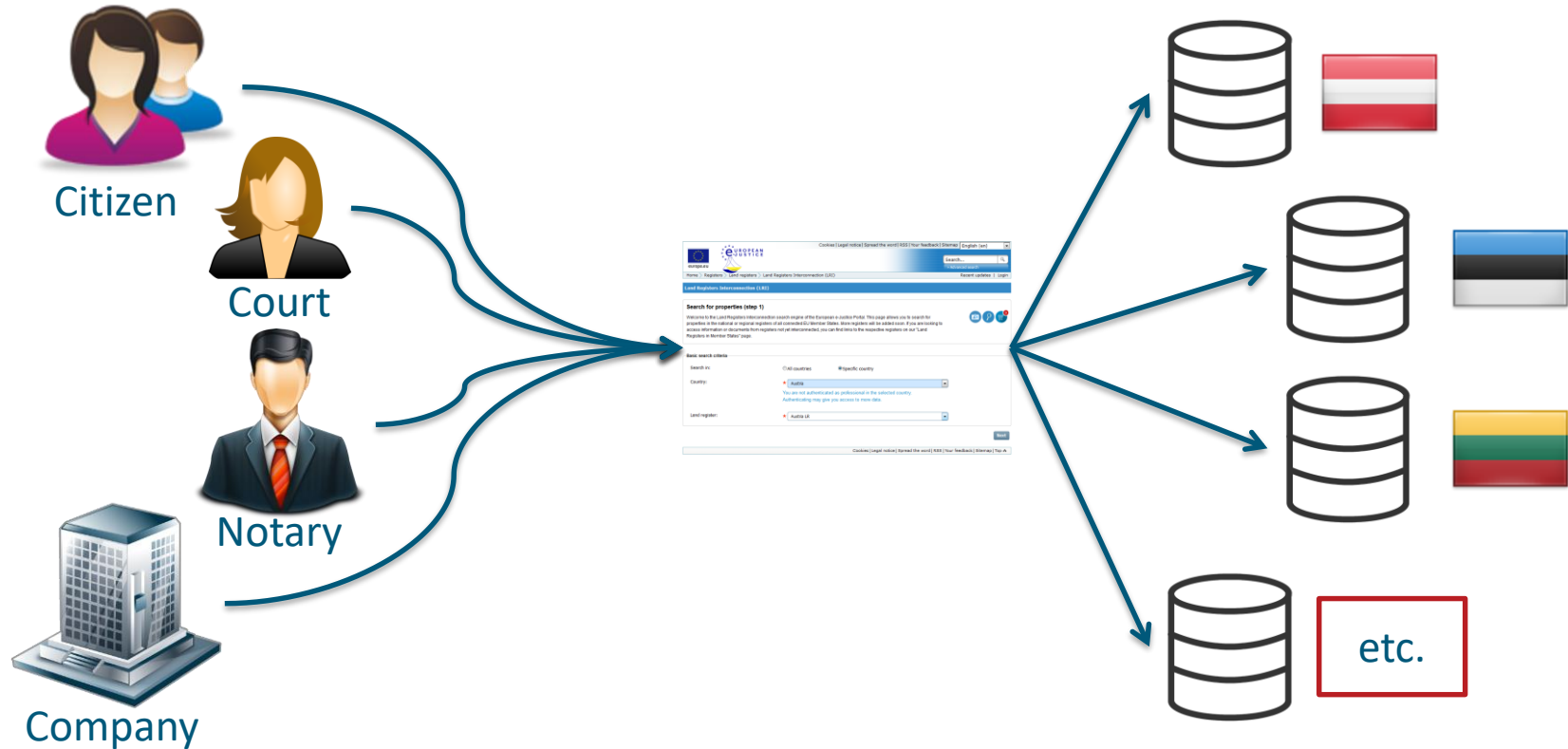

Apply filters

6 records found. [disolavino all records.](#) Page: **1**

Cookies
Legal notice
Spread the word
RSS
Your feedback
Sitemap
Top

# The Solution

# Architecture



# Key Functionalities

## Search options

- EU-wide
- Country-specific

## Payment

- Shopping Basket
- Tax Calculation

## Authentication

- Via SAML
- eIDAS compliant

# Contact

**Manfred Buric**

manfred.buric@bmj.gv.at

**Mathias Maurer**

mathias.maurer@brz.gv.at

**Sebastian Leitner**

sebastian.Leitner@brz.gv.at

## Austria

Federal Ministry of Justice  
Bundesministerium für Justiz

## Estonia

Centre of Registers and Information Systems  
Registrite ja Infosüsteemide Keskus

## Spain

Public Law Corporation of Land and Mercantile Registrars  
Colegio de Registradores de la Propiedad y Mercantiles de España

## Latvia

Court Administration  
Tiesu Administrācija

## Hungary

Prime Minister's Office  
Miniszterelnökség

## Portugal

Institute of Registries and Notaries  
Instituto dos Registos e do Notariado



Funded by the  
European Union

Federal Ministry  
Republic of Austria  
Justice

BRZ



Court Administration of the Republic of Latvia

RIK  
Centre of Registers and Information Systems



PRIME MINISTERS' OFFICE  
HUNGARY

IRN  
instituto dos  
registos  
e do notariado

## Contact:

katr.tammsaar@rikee

Centre of Registers and Information Systems, Estonia

Last update: 22.05.2020

## Connecting Land Registers To E-Justice Portal

**Title of the Project:** LRI Member State Connection 2 – Connection of additional Member States to the Land Registers Interconnection Platform (LRI MS Connection 2)

**Project period:** 31 March 2020 - 30 October 2021

## Project Activities:

The Project expands the circle of Member States which will take next steps towards in connecting the national land registers to the [European e-Justice Portal](#).

See [the demo](#) with a new design of the [Land Register Interconnection service](#) (LRI).

Within the project Latvia will connect its land register to the LRI service platform. Hungary, Portugal and Spain will undertake thorough analysis for gaining a full understanding of the country specific conditions to be met before launching the development of the national LRI connection.

The project will provide a greater understanding of the issues and possibilities arising from the increasing number of interconnected national land registers and a systematic understanding of the possibilities to establish a standardised connection between the varieties of different land register information systems across the European Union.

The Project LRI MS Connection 2 relies on the results achieved by the previous project LRI MS Connection.