



# Land Registers Interconnected

## The Grand Picture

Manfred Buric, Mathias Maurer

LRI MS Connection Project

09.-10.05.2019

LRI MS Connection / [lri-ms.eu](http://lri-ms.eu)

This presentation was funded by  
the European Union's Justice  
Programme (2014-2020).



 Federal Ministry  
Republic of Austria  
Constitutional Affairs, Reforms,  
Deregulation and Justice

**BRZ**



Funded by  
the Justice Programme  
of the European Union

# The Origin

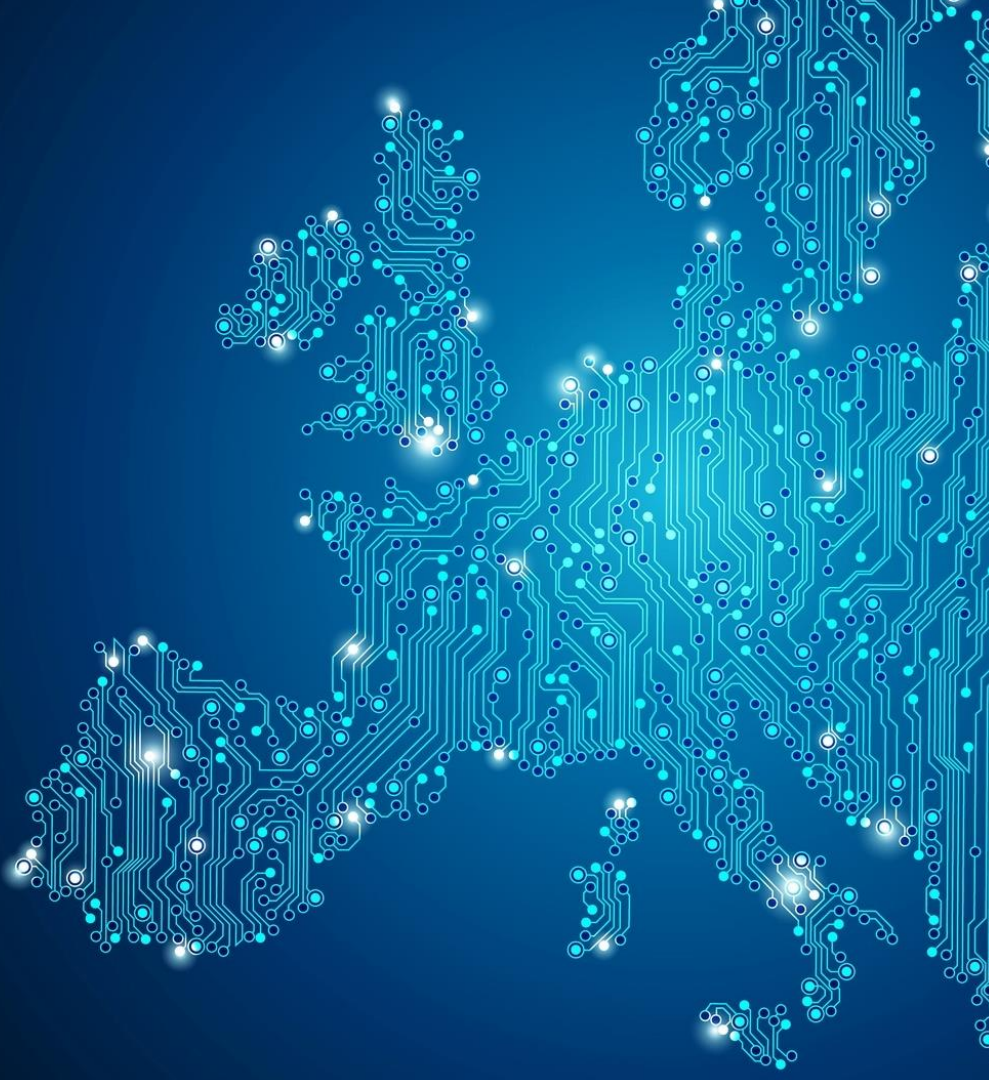
# Origin

- Regulation (EU) No 650/2012
  - “[...] in matters of succession and on the creation of a European Certificate of Succession”
  - Principle of one inheritance case per EU citizen
  - How to obtain EU-wide information about assets of the decedent?
    - Companies
    - Real Estate
    - Etc.



# Connecting Europe

- Bringing Europe a bit closer together
- Central access to legal information (in this case: land register information)
- Via e-Justice Portal



# LRI Project by EC

- 2014: Feasibility Study
- 2016: Software development started
- 2018: Connection of first MS started
- Goal: ...single access point, established at the e-Justice Portal, for the acquisition of land-related information of participating MS.





# Other use cases

- Citizen buys real estate
- Bank needs security for loan
- Public Prosecutor needs to block financial transactions due to money laundering in connection with real estate trades



# LRI Conference

- Gathering and Connecting the International Land Register Community
- Sharing the Findings of the Piloting Countries
- Raising Interest in LRI Participation



# The Project



# Key project data

## Content

Action acronym: **LRI MS Connection**

Action full title:

**LRI Member State Connection - analysis, design and implementation of the national Web services for communication with the Land Registers Interconnection (LRI) platform at the European e-Justice Portal**

Duration: **15 months**

Start-Date: **01 March 2018**

End-Date: **31 May 2019**

## Formal parameters

Grant agreement No: **785840**

Topic: Action grants to support national or transnational e-Justice projects

Type of action: Justice Action Grant:  
**785840 — LRI MS Connection — JUST-AG-2017/JUST-JACC-EJU-AG-2017**

Consortium agreement is required: **Yes**

Reimbursement rate: **80.00%** of the action's eligible costs

# Two Project Partners

 Federal Ministry  
Constitutional Affairs, Reforms,  
Deregulation and Justice

*supported by:*

**BRZ**



**RIK**

Centre of Registers and Information Systems



# Objectives

1. Connecting existing land registers.
2. Implementing the national side of the Land Registers Interconnection (LRI) for the land registers of AT and EE.
3. Making land register data available via the e-Justice Portal.
4. Serving citizens, companies and legal professionals in other Member States.




Search
Login

Home > Registers > Land registers > Land Registers Interconnection (LRI)

## Land Registers Interconnection (LRI)

**Properties**

This page presents the properties matching the search results.

**List of properties**

Country	Address	Property ID	Further details	Available documents
Belgium	Dromolaxia, Timiou Prodromou 1, 1(1)	1000	<a href="#">View details</a>	<a href="#">Available documents</a>
Belgium	Penolia, Grigoriou Auksentiou 1, 1(1)	2000	<a href="#">View details</a>	<a href="#">Available documents</a>
Italy	Uditore-Passo di Rigano, Via Luigi Sarullo 2, 2(8)	1000	<a href="#">View details</a>	<a href="#">Available documents</a>
Italy	Palazzo Reale-Monte di Pietà, Via Francesco Omodei 1, 1(5)	2000	<a href="#">View details</a>	<a href="#">Available documents</a>
Sweden	Dromolaxia, Timiou Prodromou 1, 1(1)	1000	<a href="#">View details</a>	<a href="#">Available documents</a>
Sweden	Penolia, Grigoriou Auksentiou 1, 1(1)	2000	<a href="#">View details</a>	<a href="#">Available documents</a>

Please select


Apply filters

6 records found. [disolavino all records.](#) Page: 1

Cookies
Legal notice
Spread the word
RSS
Your feedback
Sitemap
Top

# Principles

- **Decentralised approach: keeping existing systems**
- **Connecting existing systems to a centralised search**
- **Analyse adaptations for connection of national systems**
- **Suggest adaptations of central LRI**

# Key Content

- **Business Analysis and Solution Design for LRI Requests/Responses (WP2)**
  - Describes mapping of LRI Requests/Responses to national Land Register search functions and country specific search forms
- **Development, Test and Deployment of national components for LRI (WP3)**
- **Adoption of the national Authentication Portal for court professionals (WP4)**
  - Describes the envisaged solution on authentication and authorisation including SAML flows.



# e-Justice Portal Video



# Contact

**Manfred Buric**

manfred.buric@bmvr dj.gv.at

**Mathias Maurer**

mathias.maurer@brz.gv.at

**Katri Tammsaar**

katri.tammsaar@rik.ee

<https://lri-ms.eu/>



Funded by  
the Justice Programme  
of the European Union



Federal Ministry of  
Constitutional Affairs, Reforms,  
Deregulation and Justice

INDEPENDENT | TRANSPARENT | CITIZEN-ORIENTED



eRIK

Centre of Registers and Information Systems

## LRI MS Connection (EU Project: March 2018 - May 2019)

EU Project for Interconnecting Estonian and Austrian Land Registers with the e-Justice Portal

### Interconnecting Estonian And Austrian Land Registers

Welcome to the conference „Land Registers Interconnected“ on **May 9 - 10, 2019** in Tallinn. [See details](#)

See the [Project overview](#) and follow the ongoing activities at the [Project News](#) blog.

In March 2018, the Centre of Registers and Information Systems in Estonia together with the Austrian Ministry of Justice launched an EU funded project **LRI MS Connection**, which will be running until May 31, 2019.

The full title of the project is "*LRI Member State Connection - analysis, design and implementation of the national Web services for communication with the Land Registers Interconnection (LRI) platform at the European e-Justice Portal*" (Grant agreement No: 785840).

### Project Partners:

Federal Ministry of Constitutional Affairs,  
Reforms, Deregulation and Justice

**Austria**

Mathias Maurer ([mathias.maurer@brz.gv.at](mailto:mathias.maurer@brz.gv.at))

Manfred Buric ([manfred.buric@bmvr dj.gv.at](mailto:manfred.buric@bmvr dj.gv.at))

Georg Garstnauer ([georg.garstnauer@brz.gv.at](mailto:georg.garstnauer@brz.gv.at))

Centre of Registers and Information Systems

**Estonia**

Katri Tammsaar ([katri.tammsaar@rik.ee](mailto:katri.tammsaar@rik.ee))

Ingmar Vali ([ingmar.vali@rik.ee](mailto:ingmar.vali@rik.ee))

Anete Merilin Martmaa ([anetemeri lin.martmaa@rik.ee](mailto:anetemeri lin.martmaa@rik.ee))



The project LRI MS Connection is funded by the European Union's Justice Programme (2014-2020).